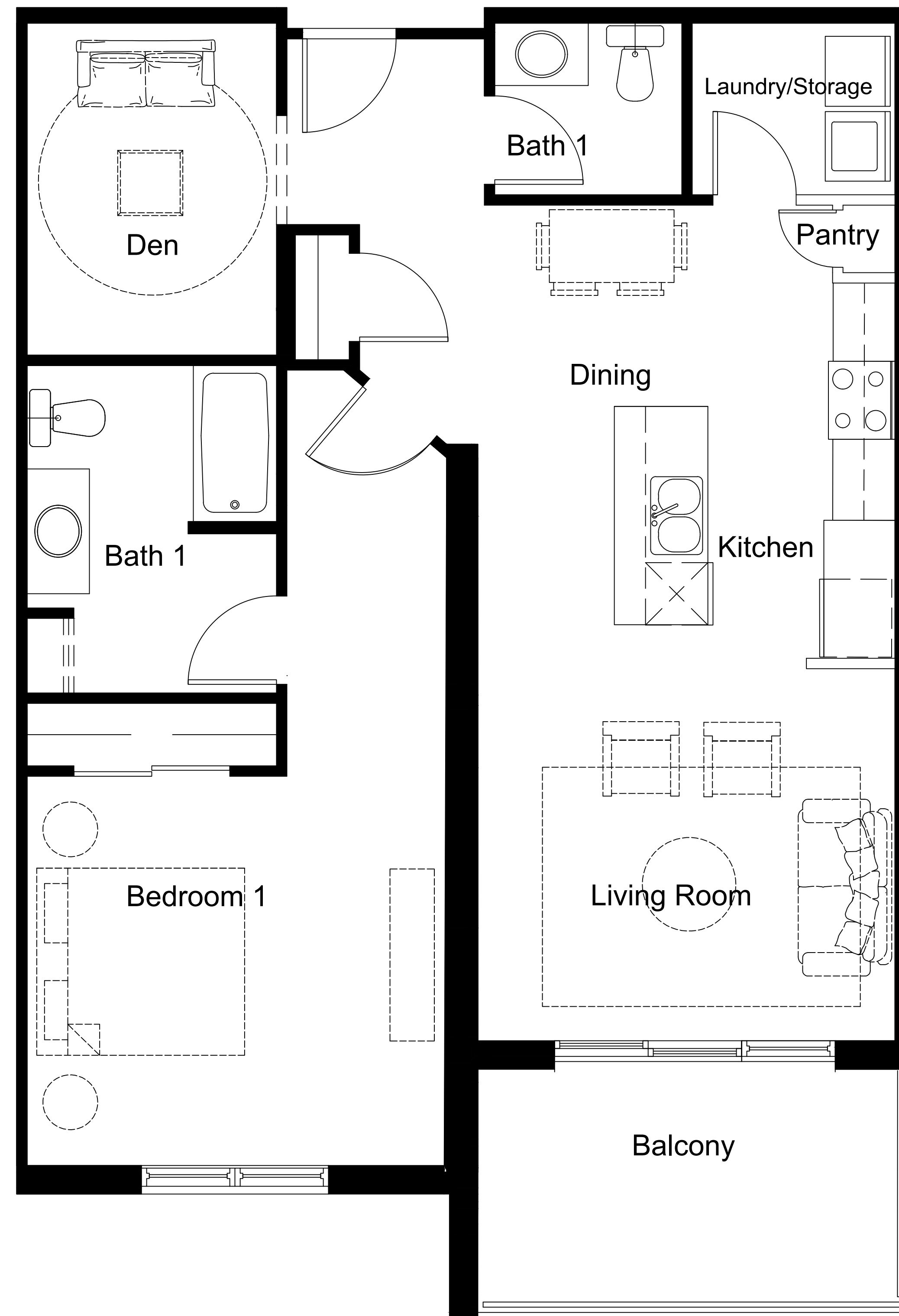


SUITE J /J1

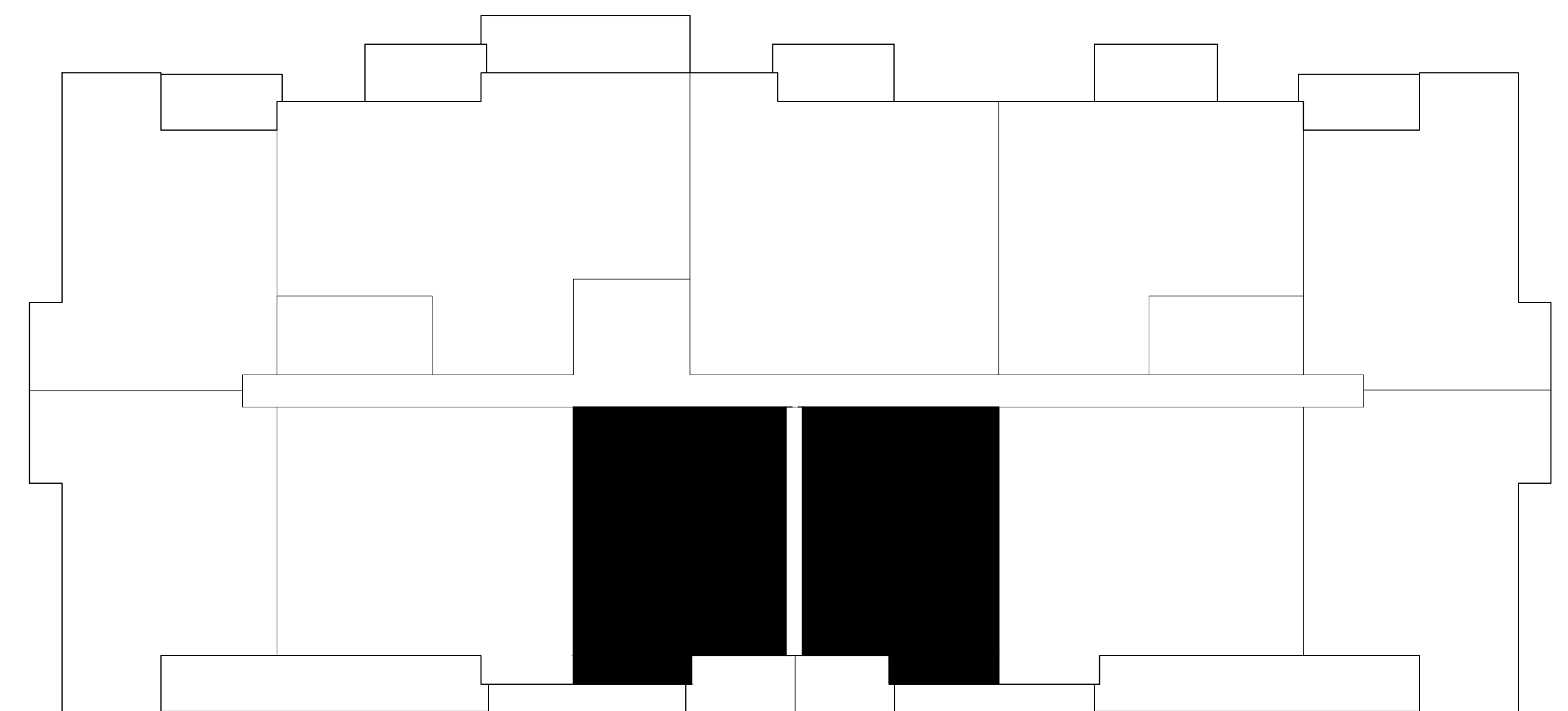


- 1 BEDROOM + DEN
- 1 BATHROOM + POWDER ROOM
- 3 ACCESSIBLE UNITS LOCATED ON 1ST AND 2ND LEVELS
- LAYOUT - 1020 sf
- BALCONY - 105 sf

FEATURES:

- SOLID SURFACE COUNTERTOPS
- 7' KITCHEN ISLAND
- 6 APPLIANCES:
WASHER /DRYER
FRIDGE & STOVE
DISHWASHER
MICROWAVE

STREET / PARKING LOT



LOCATION ON LEVELS 1,2,3 & 4

The Marci
at **35**

35 Farringdon Way