

SUITE D

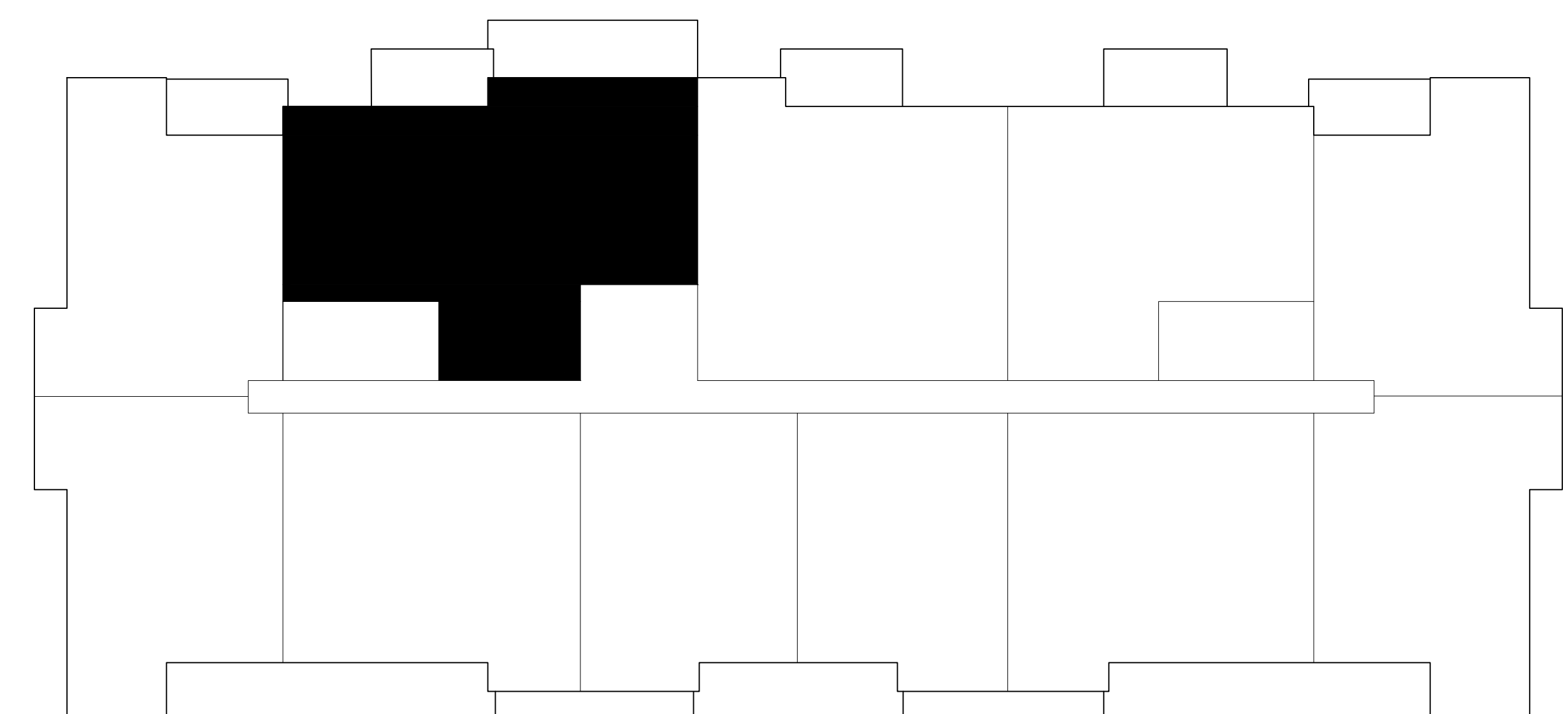


- 2 BEDROOM + DEN
- 2 BATHROOM
- LAYOUT - 1960 sf
- BALCONY - 125 sf

FEATURES:

- SOLID SURFACE COUNTERTOP
- 8' KITCHEN ISLAND
- WALK-IN SHOWER IN EN-SUIT
- 6 APPLIANCES:
 - WASHER / DRYER
 - FRIDGE & STOVE
 - DISHWASHER
 - MICROWAVE

STREET / PARKING LOT



LOCATION ON LEVELS 2, 3 & 4

The Marci
at **35**

35 Farringdon Way