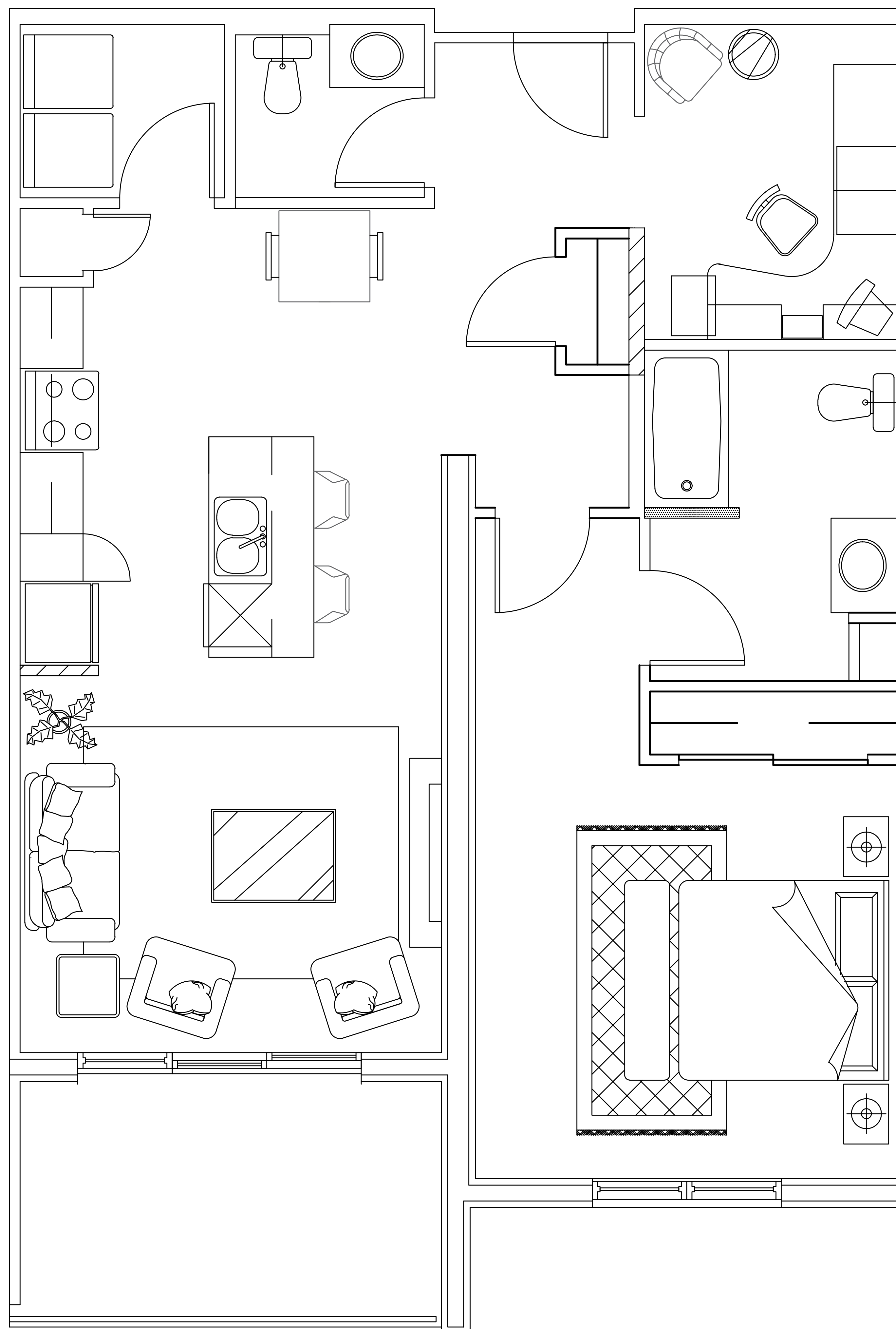


*The Marci II*  
at **48**

48 Farringdon Way



# SUITE J

- 1 Bedroom + Den
- 1 Bathroom + Powder Room
- 3 Accessible units located on 1<sup>st</sup> and 2<sup>nd</sup> levels
- Layout - 1020 sf
- Balcony - 105 sf

## FEATURES:

- solid surface countertops
- 8' kitchen island
- 6 appliances
  - washer/dryer
  - microwave
  - dishwasher
  - fridge/stove